



BANZAI

JAPANESE CARS

THE UK'S BEST-SELLING MAGAZINE

WIN

WIN



Surface
modifying
lubricants

The cult
Wagon Maker
wide-body kit
becomes production
reality in a stunning
UK S13 drifter

Cream Cracker

DEC 2010
Issue 110
£4.50



12

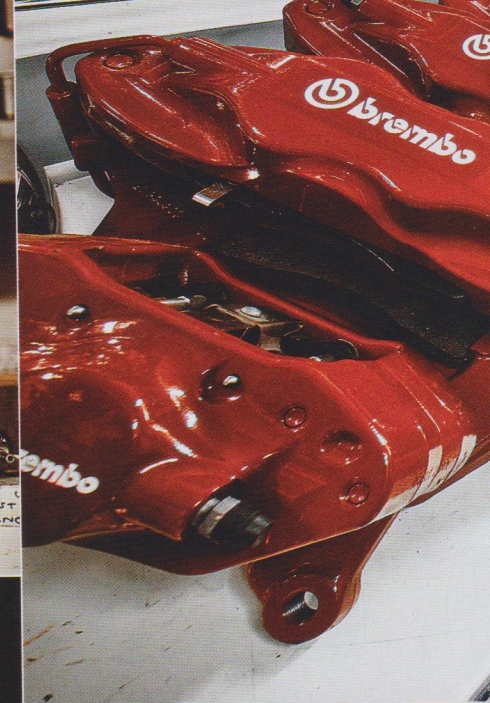
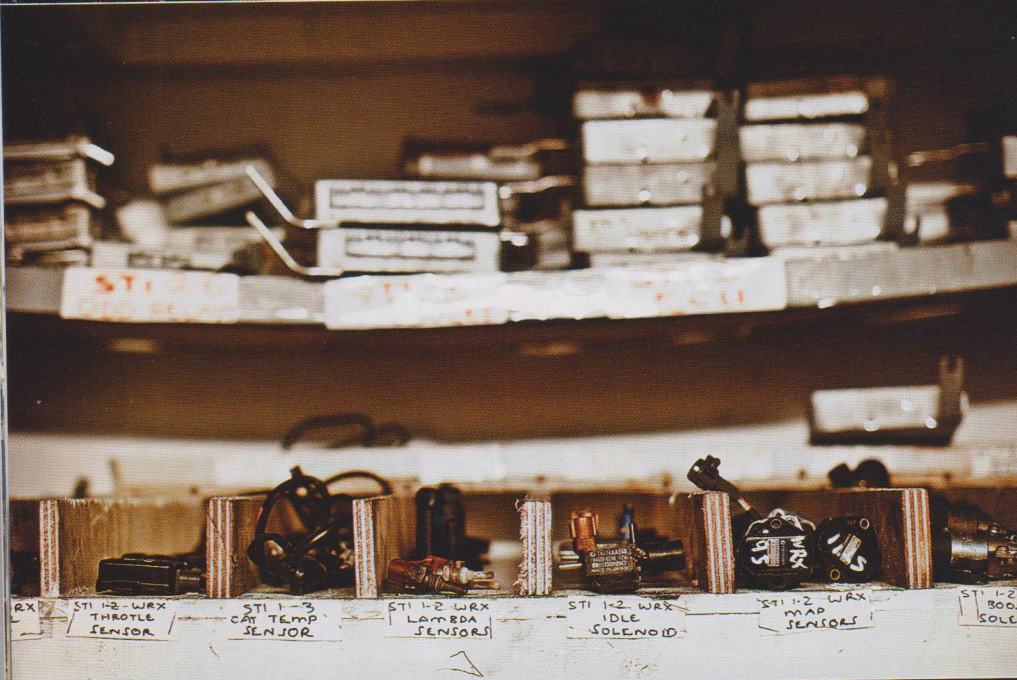
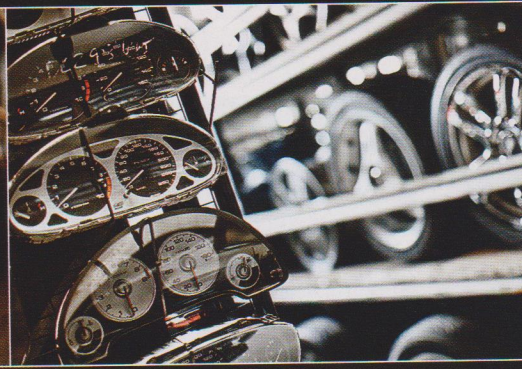
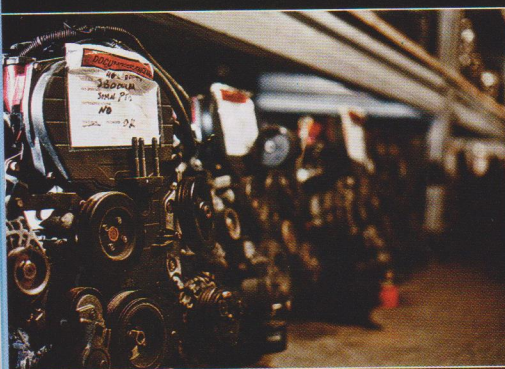


CYBER

ATTACK

Up close and personal with the
UK's very own 1000bhp Cyber Evo

COMPANY PROFILE



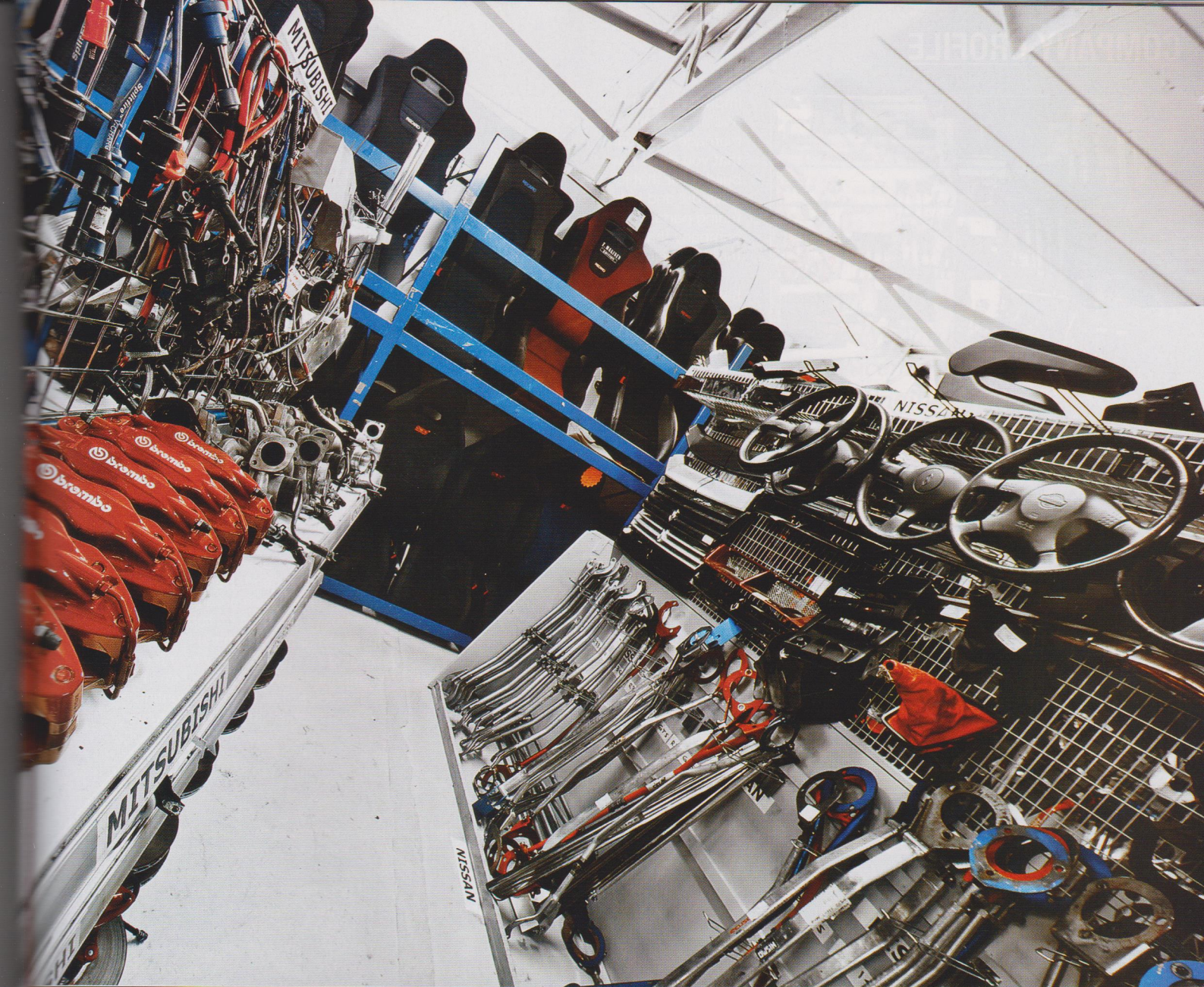
WHO ARE...

JAP PERFORMANCE



If the idea of using perfectly-serviceable salvaged and secondhand parts was appealing a couple of years ago, then it has to be one of the only ways that your average Joe Bloggs is going to make any serious progress with an exciting Jap project in the current economic climate. Most of us have more pressing financial commitments to care for – you know, the mortgage, heating, food on the table, that kind of thing – and the inevitable result is that non-essential spending is going to take a hit.

Thank goodness then that Jap Performance Parts (JPP) not only exists but is going from strength to strength, riding out the financial storm that has already claimed so many companies in the scene. Founded back in 2005 by Sajid Moghal, JPP was the answer to Sajid's personal experience of trying to repair a crash-damaged STI by picking up spares from the internet. The ensuing gestation



PARTS?

DO CASH-STRAPPED TIMES MEAN THAT YOUR CAR BUILD PROJECT HAS TO BE PUT ON HOLD? NOT IF YOU CHECK OUT THE WARES OF THE MASTER OF PRE-LOVED PARTS, WEST SUSSEX-BASED JAP PERFORMANCE PARTS.

period where Sajid realised that there wasn't any company catering to the needs of the secondhand spares market gave birth to JPP and the company was soon up and running in the West Sussex town of Crawley.

Fast forward to 2009 and the business had grown so much that Sajid moved the operation to a new site in the town. With a building and yard that covers a massive 20,000 sq ft, you might think that the JPP staff would be rattling around in the place, but the scale of the outfit is simply astounding. JPP continues to specialise in importing from Japan and breaking the types of performance vehicles that most importers wouldn't even bother with – the broken ones – and it also has a frequent and steady supply of pre-loved performance parts accompanying shipments from the East. Need a driveshaft? On average, JPP has 2000 in stock. A complete engine? Take your pick from a choice of 100,

all with paperwork and documents attached. And it's highly likely that whatever Japanese performance car you own, JPP will stock parts for it. The company has been working hard to expand the range of models it caters for and now has a substantial product base that covers all of the major marques, now including the Honda S2000, EP3 Type-R, and R32/R34 Skylines (among others) that joined JPP's established lines for WRX STI Imprezas, Lancer Evos, EK9 Civic Type-Rs and DC2/DC5 Integra Type-Rs. The very latest cars to be added to the ever-expanding portfolio are late model 2009 STIs and Evo Xs, perfect for the enterprising enthusiast who fancies retro-fitting the latest machinery into an earlier model.

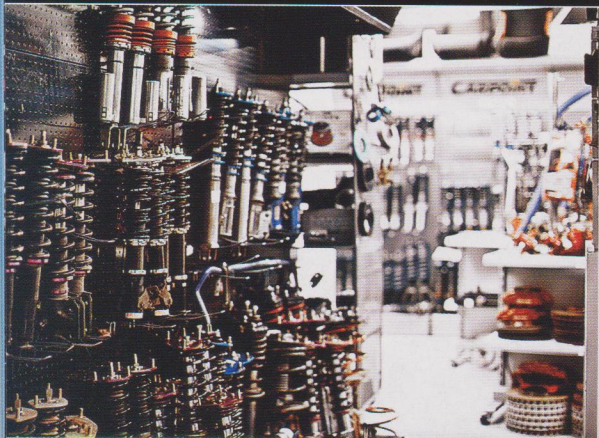
As you can see from the photos, this is far from a dingy breaker's yard outfit. As the donor vehicles arrive and are stripped down, all components that are suitable for

reincarnation in another vehicle are fully inspected, cleaned and then transferred to the numerous spans of racking that are all neatly labelled to keep stock accurately sorted and easily accessible. And it has to be – JPP offers its customers a guaranteed next day delivery service for mainland UK and has speedy delivery links to Europe, too, so it is essential that the knowledgeable staff can quickly and precisely lay their hands on exactly the right part for the customer, get it packaged and away. Of course, this is great news for the growing numbers of enthusiasts who turn to JPP to make their money go further.

Using JPP for your project is an intriguing prospect with immense potential, demonstrated by the company's own Nissan-powered Impreza drift car (see cover feature in issue 108). It's JPP's first foray into motorsports and when you consider that 99% of the components used to build this

WORDS: ANDREW BIDDLE
PHOTOS: PHIL STEINHARDT

COMPANY PROFILE



impressive drift machine were secondhand, and have been reborn in an interesting marriage of Subaru and Nissan, it shows that you don't have to have mega-bucks to build a car that is genuinely exciting, powerful and kitted-out with desirable tuning parts. What better testimonial for a company than to see it putting its products through their paces in a competitive arena?

To reach an even wider audience, JPP has recently teamed up with BTCC driver, James Kaye, in support of his return to Britain's premier touring car series in a DC5 Integra, recently seen on display at JapShow Finale.

So what's in store for JPP in the future? Well, the company has been busy developing 'Jap Performance Carbon', a range of brand-new high quality body and trim parts manufactured here in the UK to OEM standards. The product line-up will kick off with offerings for Evos, Imprezas and various Hondas and Nissans and will focus on items that are less commonly available in the scene; expect to see centre gauge pods, dash trims and the like, in addition to an exciting array of distinctive bonnets, bootlids and spoilers.

Not content to be the market leader for supply of second-hand Japanese performance parts in the UK, JPP is focusing its efforts on raising the profile of the brand and its services across Europe. With direct deliveries from the UK to customers on the continent available on a 2-3 day courier service, the infrastructure is in place to extend the JPP philosophy far and wide. There is already an agent in the Netherlands and prospects to develop the business in Poland, Germany and the Czech Republic very soon.

In the meantime, if there's anything you need and can't justify the expense of paying main dealer prices for a brand-spanking-new version, then give the experienced JPP team a call. They are trained to advise on all manner of parts queries from simple service enquiries to the intricacies of complex conversion. If you are able to pay a visit to

JPP's HQ then make sure you're prepared to be tempted by the heady display of more than 2500 items in the shop. Don't fret, though, you'll get more for your money at JPP than at other tuners and there's the added peace of mind that all of the second-hand parts used in road car applications carry a 28-day warranty with equivalent part replacement or money back guarantee.

If you're thinking a bit bigger than simple bolt-on tuning parts, it's worth talking with the team too. As they bring in regular shipments from Japan, they are well-placed to source repairable cars for customers (the exact scenario that set Sajid on his way) and often have a stock of desirable vehicles in the UK awaiting repair.

If you don't fancy the task of reassembling a high-performance Jap motor from a collection of parts, the boys are kept busy returning a handful of salvageable cars to former glory using the wealth of stock sitting in the warehouse.

When it comes to being in the right place at the right time, Sajid has struck the nail squarely on the head. Before the world's economy took a rush around a U-bend, JPP's business was a brilliant solution to a unplugged gap in the market, but now it is providing an essential service if the scene is to continue to evolve and inspire in the coming years. The business continues to thrive because Sajid and his team are getting the message out that equipping a car with warranted second-hand parts from a reliable and reputable supplier pays dividends when it comes to keeping projects moving forward and satisfying the bean counters at the bank, rather than the luck-of-the-draw results experienced when buying unseen from an auction site or forum post, or simply insisting that everything has to be factory-fresh and shiny.

Considering just how many trick tuner parts have been fitted to Japanese performance cars over the years, it's a foolish person that equates 'second-hand' with 'second rate'. And you know what they say about a fool and his money 🍀

CONTACT: Jap Performance Parts (01293 520090 or www.japperformanceparts.co.uk)

**Need a driveshaft?
JPP has 2000 in stock.
A complete engine?
Take your pick from a
choice of 100**

